



ADVANCED ENVIRO))SEPTIC (AES) COMPONENTS

- A Pre-Tank sized for 1½ day daily flow retention and configured similar to a septic tank.
- Distribution box for gravity flow into the AES Pipe.
- AES Pipe with couplers and end caps for 4" inlet and vent piping.
- Surround Air technology™ introduces oxygen through the use of atmospheric pressure - speeds the process back to nature.
- Specified System Sand under, between and on top of the AES pipe.

Note: Fields uphill of the pre-tank will require a small lift station to pump the Pre-Tank discharge into the distribution box.

SIMPLE AND FAST INSTALLATION

The installer does not fuss with pump systems, electrical work or preparing a pressure distribution system. The AES system is simple and fast to install with minimal tools required.

EVEN DISTRIBUTION

Even field distribution is achieved through the Bio-Accelerator that lays on the base of the AES pipe (white fabric). The Bio-Accelerator fabric acts as a wick that encourages wastewater to travel down the full length of the AES pipe. Forced distribution within the field is not required. This means no pump, pump tank or controls - nothing to adjust or go wrong.

FORGET ABOUT SPECIAL MAINTENANCE

No replacement media is ever required and there are no mechanical parts to fail or repair. No costly technician call outs. Home owners shall follow health regulations in their region for required maintenance.

KEEP IT SIMPLE

With no moving parts and natural flow of aeration (oxygen), this proven and reliable technology delivers peace of mind for over 200,000 home owners and wastewater professionals Worldwide.



PROVEN TECHNOLOGY

Tested and certified by two agencies recognized by the Standards Council of Canada

NSF (National Sanitation Foundation)

Lists the AES system as meeting Standard 40, Class 1.



NSF International
Services in Canada

BNQ (Bureau Normalization du Quebec)

Lists the AES system as meeting the highest performance for BOD5 and TSS effluent.



Bureau de normalisation
du Québec

TEST MEASURE	TSS (mg/l)	BOD (mg/l)	FECAL (mg/100ml)
Type 2 System Standard	<45	<45	N/A
Type 3 System Standard	<10	<10	<400
AES Enviro))Septic Pipe	<5	<5	<300

TSS - Total Suspended Solids
BOD - Biological Oxygen Demand
FECAL - Fecal Coliform Count

Follow the AES design and installation manual to meet the above performances.

Contact us for:
Technical Information or Installation Manual.

Distributed by:

IMAGINE ENVIRO))SEPTIC
as your partner in the wellbeing of your home.

PREMIER PLASTICS INC. 8328 River Way, Delta, BC

November 2019

ADVANCED
ENVIRO))SEPTIC

ADVANCED WASTEWATER TREATMENT SYSTEM FOR YOUR HOME

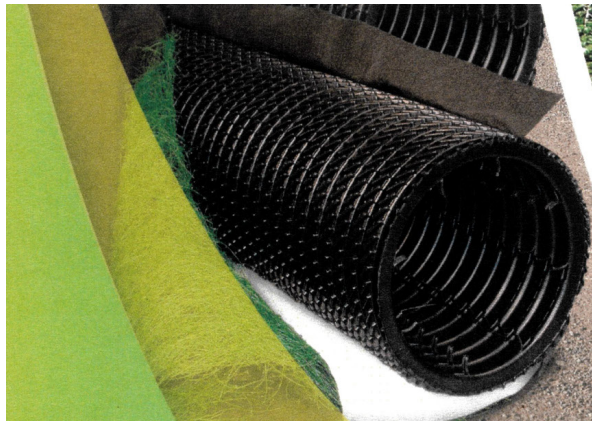


- ✓ **Passive Treatment and Dispersal All-in-One**
- ✓ **No Moving Parts - Minimal Servicing**
- ✓ **Natural Oxygen Flow Digests Wastewater**
- ✓ **Fast, Easy installation - No Tools Needed**
- ✓ **Certified by Major Testing Agencies**

PREMIER
PLASTICS

Contact us Today!
1.800.661.4473

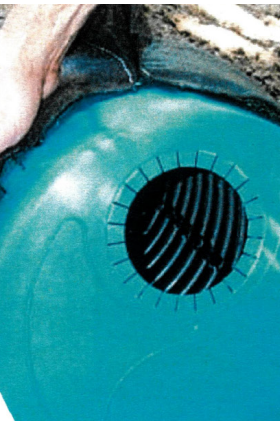
www.premierplastics.com



High surface area, 12 inch diameter Biotube, Fibre Media, Wicking Layer, Geotext Wrap



10 ft. long sections strap together with no glue, screws or hand tools of any kind



Friction fit collars for 4 inch dia. inlet and vent pipes



IMAGINE your home with a totally passive, high efficiency wastewater treatment system that works silently and tirelessly 24/7 taking good care of your household wastewater needs.

No electricity, pumps, motors or control panels are required; the system naturally treats and disperses without energy and without noise.

The simple solution for high quality, trouble free sewage treatment.

Fast and efficient assembly. No tools - just one pair of strong hands required.

Exceeds NSF and BNQ certified performance for Type 2 and Type 3 septic treatment systems.

ADVANCED ENVIRO||SEPTIC SYSTEM

A Division of Infiltrator Technologies.